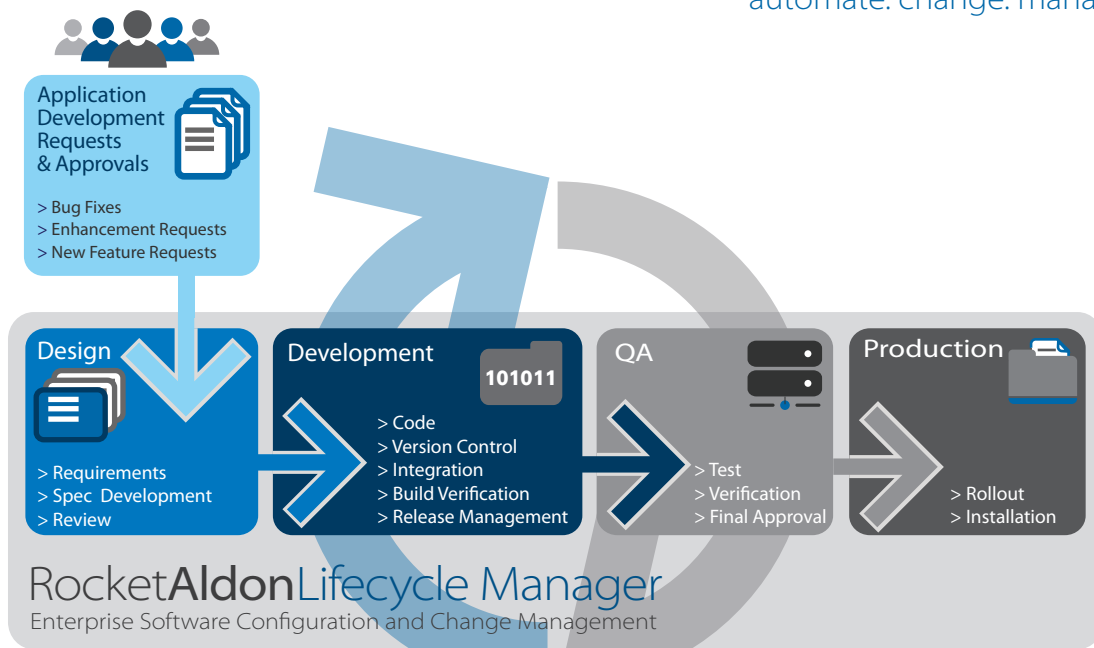


Rocket Aldon® Lifecycle Manager

automate. change. manage.

- Enforces and streamlines compliance requirements
- Automates development processes, increases quality levels
- Easily monitors and manages multiple, geographically distributed and outsourced project teams
- Simplifies maintenance development
- Secures software assets
- Ensures quality level software with comprehensive build release management
- Supports all platforms with flexible architecture for IDE integration



total software change management from change requests to production

Rocket Aldon® Lifecycle Manager (LM) is a software configuration and change management solution for enterprise applications. Our software automates and streamlines the entire software development process, providing visibility and control required in an enterprise environment—increasing developer productivity, improving code quality, and meeting regulatory and best practices requirements.

With Aldon LM, you can automatically track and accelerate the management of all your software and maintenance processes and workflows from design to production. Our software keeps you in control of all parts of the application development lifecycle while increasing your developers' productivity so that you can deploy IT projects on time. Our products offer complete change and release management for software development in any environment—Windows, Unix, Linux, and the IBM i platform. Its comprehensive activity tracking and performance reporting provide management with the input and feedback needed to optimize IT's responsiveness.

From the moment a change is requested or an enhancement is filed, you are in total control of your application development lifecycle and software change management process. What's more, our software gives you a way to easily keep compliant, from user request through release to production, so passing an IT audit is never a problem.



enforces and streamlines compliance requirements.

Aldon LM enables managers to quickly and consistently respond to internal regulations and legislated standards in parallel with the software development process. For each application, management can define a process to ensure that components automatically pass through the defined phases, and that company policies and government regulations are enforced. Our software reduces the administrative burden on developers by automating compliance requirements so that developers are not delayed or distracted by mundane tasks.

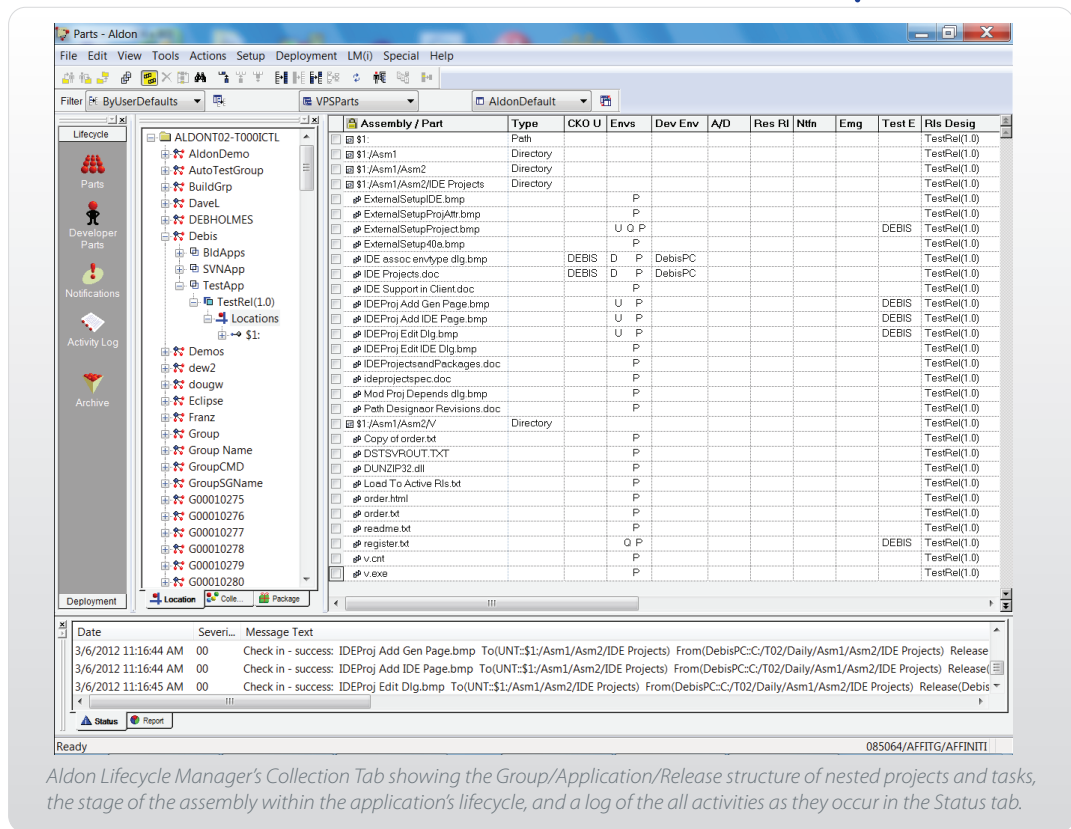
automates development processes, increases quality levels.

Aldon LM streamlines the application development process to improve code quality. The automatic promotion process eliminates the manual movement of files, rebuilding of indexes and objects, and updating of data libraries, virtually

eliminating the chance for errors. Aldon Lifecycle Manager will even create an archive copy if desired. The promotion process can be controlled via role-based security, ensuring that code can't be promoted without the proper authorization.

easily monitors and manages multiple, geographically distributed and outsourced development teams.

Our software enables fine-grained control of geographically distributed and outsourced development teams. Specific releases and modules can be easily created for use by distinct teams, limiting the accessibility of code to outside teams. Outsourced development is relegated to its own environment, separated from in-house development, to be merged when appropriate. Unauthorized access to the code base is prevented through role-based security. Aldon LM provides the control and management essential for successful distributed development.



Aldon Lifecycle Manager's Collection Tab showing the Group/Application/Release structure of nested projects and tasks, the stage of the assembly within the application's lifecycle, and a log of the all activities as they occur in the Status tab.

CM

CM
DB

RM

LM

DM

how

how aldol lifecycle manager works.

After all applications, codes, files, and projects are placed in Aldon Lifecycle Manager's central repository, our software tracks the status at any time. For software development, when you check an object out, it can be tracked throughout its entire lifecycle. With the associated assigned permissions, you can promote application components throughout the development lifecycle (i.e. development, testing, production, etc.) and Aldon LM will track it. In addition, the application components can be automatically deployed at each stage of the lifecycle. At each stage, our software logs all activities and assures only approved users perform any operation.

simplifies multiple releases.

Coordinating the development of multiple releases is a common, but complex, task. Our software simplifies the process by specifying and defining multiple releases through its release management capabilities. Updates are synchronized automatically between these releases, eliminating manual processing of files and errors inherent with these processes.

secures software assets.

Aldon Lifecycle Manager's security features provide powerful authorization and authentication. Users are grouped into roles—such as engineers, development managers, or senior IT managers—and are granted varying levels of authority, providing more control over access usage than ever before.

achieves flexible IDE integration and multi-platform development.

Aldon Lifecycle Manager's flexible architecture supports even the most complex environments.

Through our ongoing support of technical standards such as Eclipse and SCCI, users have the flexibility to choose the best tools for their IT needs. Furthermore, Aldon LM provides automation, management, and visibility of development across all platforms. Development teams can focus on project deliverables, avoid unnecessary disruption, and continue to operate within their preferred environments.

automates deployment.

Deployment of applications and files is usually a manual process that can be prone to error. Aldon Lifecycle Manager works with Aldon Deployment Manager at each stage of the lifecycle to gather, package, distribute, and install application components. A management console allows users to carefully track and govern distributed packages. For multi-platform distributed environments, Aldon Deployment Manager eliminates the need for complex scripts, dramatically simplifying deployment.

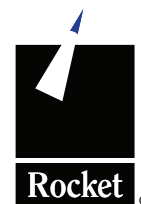
technical specifications.

client requirements

- ❖ Windows 2000, Windows XP, or Windows 7

server requirements

- ❖ For Linux Operating Systems
 - Red Hat Enterprise Linux Version 4 5.x and CentOS 5.x or higher
 - IBM DB2 Express-C Database Version 9.7 (standard configuration; installed with the package)
- ❖ For IBM i Operating Systems:
 - IBM i 5.4 or higher
- ❖ Additional Software:
 - IBM Java Software Development Kit 1.6.0 or higher (installed with the package)
 - Apache Software Foundation Jakarta Tomcat Version 6.0.18 or higher



-  aldon.rocketsoftware.com
-  aldon@rocketsoftware.com
-  twitter.com/rocketaldon
-  facebook.com/rocketaldon
-  youtube.com/rocketaldon
-  www.rocketsoftware.com/aldon/linkedin