

DATASHEET

Rocket[®] Process Integration

Integrate your legacy systems with the rest of IT to increase productivity and drive innovation

To stay competitive, businesses need operations to run cohesively, with disparate systems talking to each other and providing more value than the sum of their parts. Platforms are increasingly moving out of their silos—in fact, the market demands it. And for businesses running critical applications on IBM[®] i/Z systems, the pressure is compounded by the dwindling of COBOL and RPG developers.

Rocket[®] Process Integration enables businesses running IBM i/Z applications to build workflows and innovative experiences that align with how customers and employees engage with your business and not to how IT is built. Unlock valuable data and logic within your IBM Z[®] and IBM[®] i core systems and connect them to the rest of the business without the need to touch underlying legacy code. Create APIs without needing to tweak underlying code or business logic within your core systems, allowing you to modernize your hosted applications for mobile access, self-service workflows, or cloud-based services today.

Product benefits

- 1 Connect your IBM i/Z applications to the rest of the business
- 2 Create APIs quickly, without the need for in-house legacy development expertise
- 3 Easily deploy, manage, and secure your APIs
- 4 Create compelling customer interactions & drive innovation





Connect your IBM i/Z applications to the rest of the business

Put your business in a better position to leverage data in a more connected and holistic way. Rocket Process Integration provides intuitive tools that enable you to unlock valuable data and business logic from your host applications without the need for RPG or COBOL experience.

Extract discrete functionality and data from your host systems that was previously difficult or impossible to access, and make those capabilities available to virtually any application. You can provide the transactional data that runs your business—from one source or many—to the people who need it. Improve customer experiences, streamline workflows, and deliver more value to the business from your IBM i/Z applications.



Create APIs quickly, without the need for in-house legacy development expertise

Enable your development team to build frontend solutions with modern languages, then connect those solutions to your IBM i/Z applications and data via APIs—all without needing to touch legacy code. Successfully attract fresh new talent that is required to create digital-centric experiences, while retaining the stability and operability provided by your core IBM Z and IBM i applications.



Easily deploy, manage, and secure your APIs

Rocket Process Integration includes a Modern Experience (MX) & Automation hub that simplifies the process of managing deployments and allows you to retain clear oversight throughout your modernization development efforts. Utilize the solution's central platform to deploy correctly, secure your APIs with role-based access, identify users who access your APIs, and monitor overall API use for performance optimization and API monetization. You can even tier gateway access based on SLAs to ensure that your high-priority users always have the access they need.

If your business runs on IBM i, Rocket Process Integration also integrates with your Rocket Aldon[®] environment, which unlocks additional agile development capabilities and allows you to implement a fully auditable DevOps methodology for development.



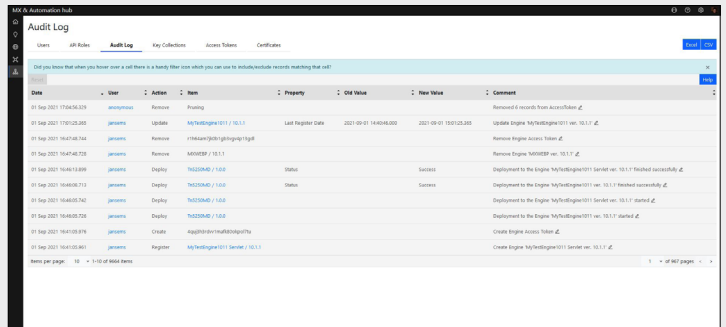
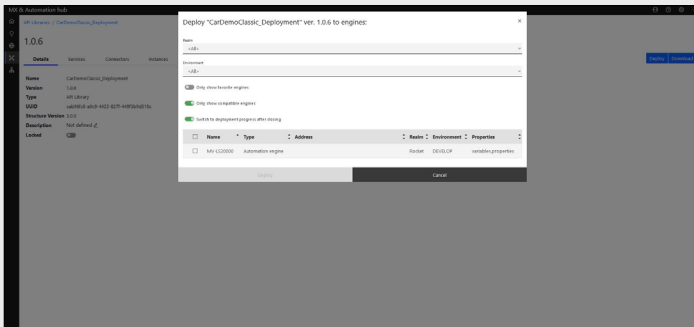
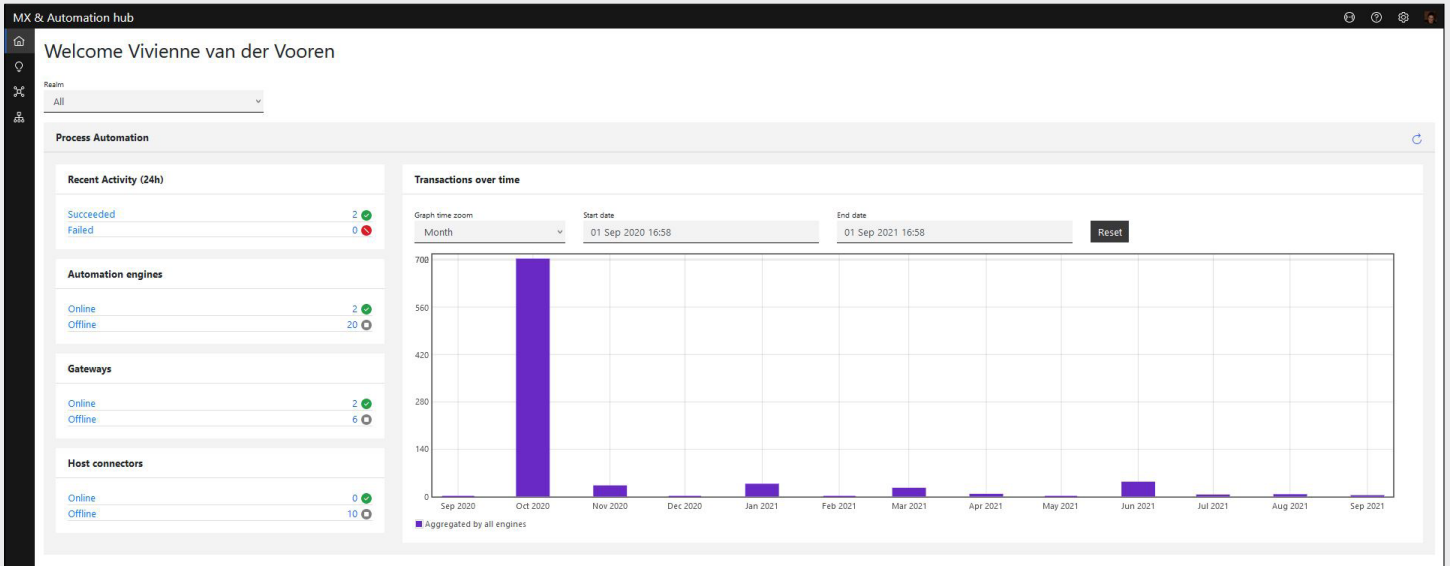
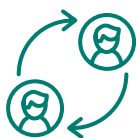


Figure 1: The Rocket MX & Automation hub provides a central location from which you can ensure that your APIs are deployed correctly, secure APIs with role-based access, identify individual users who access your APIs, and monitor overall use.



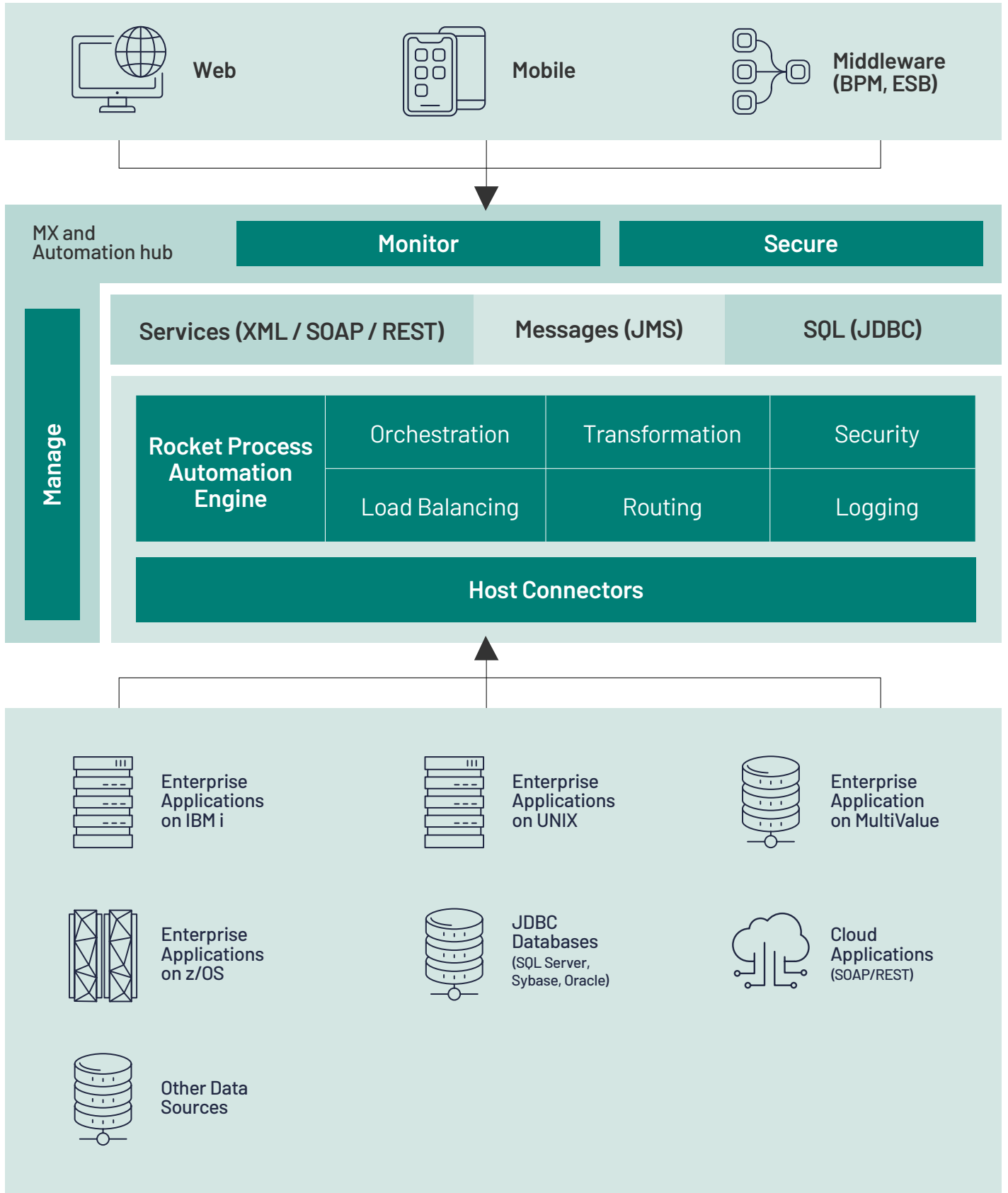
Create compelling customer interactions & drive innovation

Maximize the return on investment for your IBM Z and IBM i applications, while also building workflows and innovative experiences that align with how customers and employees engage with your business. Combine APIs from enterprise applications, cloud applications, and other sources of data and processes into individual, easily consumed services that can be accessed by web, mobile, or middleware applications.

Utilize Rocket Process Integration to focus your valuable core applications and data towards improving customer satisfaction, optimizing operations and keeping ahead with ever-changing market expectations.



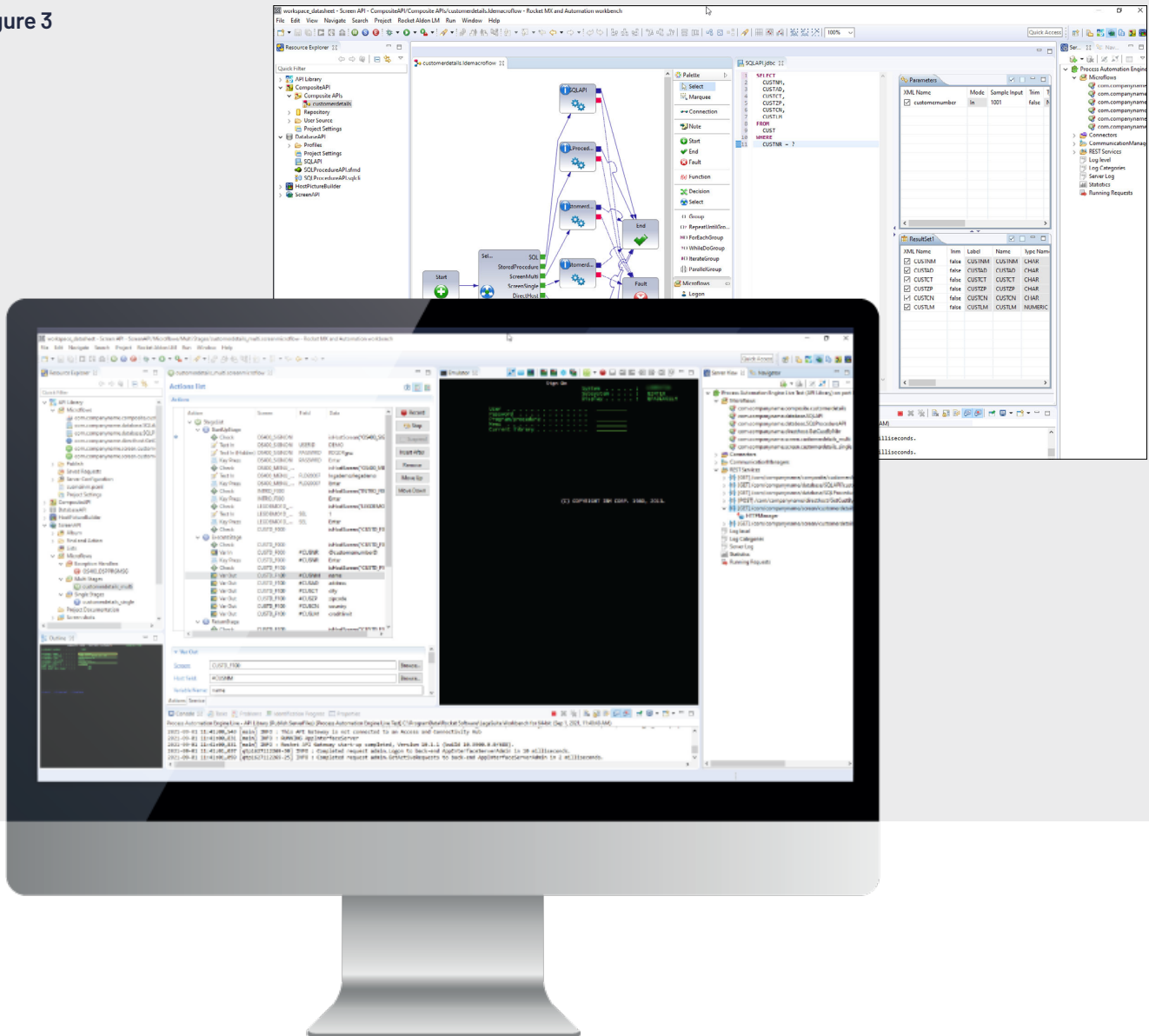
Figure 2



The Rocket® Modern Experience (MX) & Automation workbench (top of Figure 2) helps developers map data and fields found in green screens, then transform them into logic that can be extended to the rest of the business, including web and mobile devices. Even host applications that do not have a green-screen interface can be accessed via APIs.

Once you've created individual APIs, you can combine them into composite services for increased efficiency (bottom of Figure 2). Even better, you can adjust the logic behind established APIs at any point— without any change to the user experience or disruption to workflows.

Figure 3



The Rocket MX & Automation workbench is an easy-to-navigate work environment that provides complete control over the API building process. The Rocket Process Automation orchestration tool gives you complete control over building composite APIs.



Rocket Process Integration Technical Specifications

Screen protocols

- IBM® i
 - 5250
- IBM Z®
 - 3270
- ICL Mainframe
 - 7561-IRSI
 - ICL-Forms
 - DFP
- MultiValue
 - VT (vt100)
 - ADDS Viewpoint
- Unix/Linux, Open VMS, DEC VAX
 - VT (vt52, vt100, vt101, vt220, vt320, vt420)
 - Wyse (Wyse50/Wyse60)
 - Prism
 - ADDS Viewpoint
 - Qume QVT
 - Televideo TVI
- HPE/Tandem NonStop
 - 6530

Host platforms

- Power Systems
 - IBM i
 - Linux on Power
 - AIX
- IBM Z
 - z/OS
- MultiValue
- HPE/Tandem NonStop
 - NonStop OS
- ICL Mainframe
 - VME

Data access support

- JDBC/ODBC DBMSs
- IBM i data access
 - Db2
 - JTOpen
 - Native OS/400 functionality

Rocket MX & Automation workbench

- Operating System
 - Windows 10, Windows 8
- Hard Disk Space
 - 5 GB (minimum)
- Memory
 - 8 GB (minimum)
- Software
 - The Workbench includes Eclipse 4.6.3 and Java 8

Rocket Process Automation engine and Process Automation host connectors:

Unix/Linux

- Operating System
 - AIX: Version 6.1
 - HP-UX IA (Intel): Version 11.31
 - HP-UX RISC: Version 11.23
 - Linux on x86 architecture
 - Red Hat Enterprise Linux, Version 6 or higher
- Other Requirements
 - Java 64-bit, version 8

IBM i

- Operating System
 - V6R1M0 (minimum), V7R1, V7R2, V7R3:
we recommend keeping current with IBM support level
 - Physical and virtual/PaaS server environments supported - see Virtualization and Cloud below
- Software
 - IBM Java 8
- Other Requirements
 - TCP/IP Services

Windows

- Windows Version Operating System
 - Microsoft Windows Server 2016
 - Microsoft Windows Server 2012 R2
- Memory
 - 2GB RAM (minimum), 4 GB or more recommended
- Hard Disk Space
 - 2GB (minimum)
- Software
 - Java 64-bit, version 8